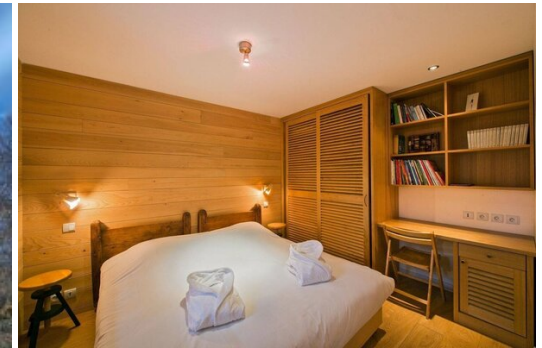


The chalet located a few minutes' walk from the centre of th

France, Méribel

chalet - REF: TGS-A3227



N° Bedrooms: 6

Sauna

N° Bathrooms: 6

Private garden

N° People: 12

Mountain view

Parking

Air conditioning

M² built: 300 m²

Dishwasher

Wifi

TV

ski-in/ski-out

Washing machine

Fireplace

Ski Room

Activities in resort

Skiing/Snowboarding

Cycling

Cross country skiing

Golf

Hiking

Mountain-Biking

Riding

Sailing

The chalet located a few minutes' walk from the centre of the resort and 100 meters from the ski slopes is a comfortable and traditional mountain chalet. The large surface area of 300m² makes the chalet one of the largest of the station accommodating up to twelve people.

The exterior architecture of this traditional chalet is that of authentic Savoyard style covered in wood with gray stone and slate on the roof. It fits perfectly in the middle of the snowy pines that border the chalet.

Its large windows let in the sun and the natural light which sublimates the interior. This mountain chalet is decorated in a Savoyard style with wooden furniture, cushions and its local embroidery. The centrepiece of the chalet is undoubtedly the living room with a large wood and stone fireplace that warms both the living room and the dining room on cold winter evenings.

For lunches at the chalet, you will hesitate between the friendly and authentic dining area and the large terrace with views of the summits ... choose the decor of your Savoyard meals.

Enjoy spacious living areas and the facilities offered by the chalet. This mountain chalet welcomes up to twelve guests in six rooms. Its magnificent master bedroom with a dressing room, spa bath and private balcony will delight its occupants. The chalet is the promise of conviviality and relaxation with a sauna, spa bath and a cinema room.

With family or friends, you will love this large mountain chalet in Meribel. Its open spaces, decoration and levels of fittings will make the success of your stay.









