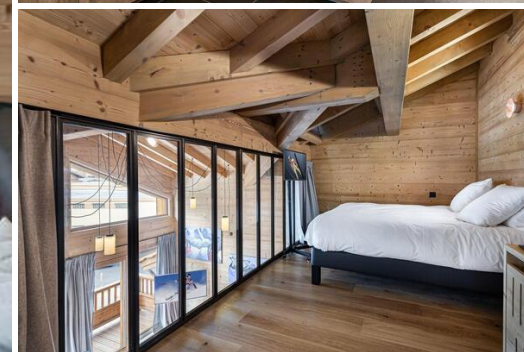
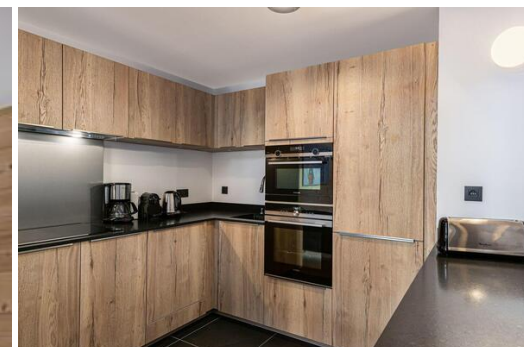
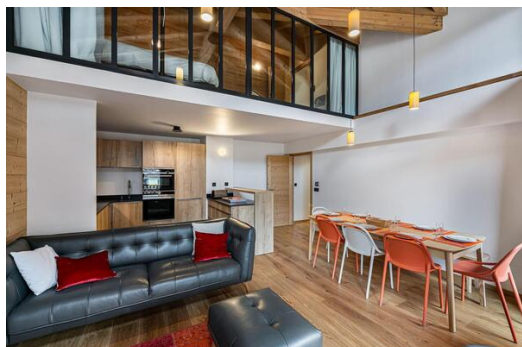


# Duplex mezzanine apartment for rental for 6 adults

France, Courchevel, Courchevel 1650

Apartment - REF: TGS-A2501



N° Bedrooms: 4

Wifi

N° Bathrooms: 4

Dishwasher

N° People: 6

TV

N° Children's: 2

Washing machine

N° parking's: 1

Ski Room

M² built: 89 m²

Distance to ski lift: 100m

Exposure: Southwest

Distance to centre: central

Floor: 2

Activities in resort

Skiing/Snowboarding

Cycling

Cross country skiing

Golf

Hiking

Mountain-Biking

Riding

## Information Apartment in Courchevel 1650 Moriond

- N° of people: 8
- M² built: 89 m²
- Terrace
- 4 Bedrooms
- 4 Bathrooms
- Parking spaces: 1
- Wifi
- Ski-room

Duplex mezzanine apartment for 6 adults and 2 children located in the residence. Between snow front, ski lifts and the resort centre, it has an easy access to the “3 Vallées” ski area, boutiques and restaurants of

the "Sunny Courchevel".

New apartment has a ground floor with living room, equipped kitchen, lounge with balcony and dining area. Two double bedrooms allow hosting 4 adults. The mezzanine floor includes a double bedroom and a children bedroom, with two bunk beds.

- Distance from the center : 100 m
- Closest ski slope : Front de Neige
- Distance from the slopes : 150 m
- Distance to ski school : 150 m
- Closest ski lift : Ariondaz
- Distance from ski lift : 0 m

Balcony

Fully fitted kitchen

Dining area

Living room

Bedroom :

Double or Twin bedroom :

- 1 Double bed (190 x 200)

Double or Twin bedroom :

- TV, 1 Double bed (140 x 200)

Bathroom :

- Bathroom 1 : Bathtub, Single sink
- Independent toilet : 1

Double or Twin bedroom :

- TV, 1 Double bed
- Children's bedroom :
- 2 Single bed (90 x 190)

Bathroom 1 : Shower, Wshing machine , Single sink, Toilet

INCLUDED

- Garage
- Ski locker
- Boots heater





