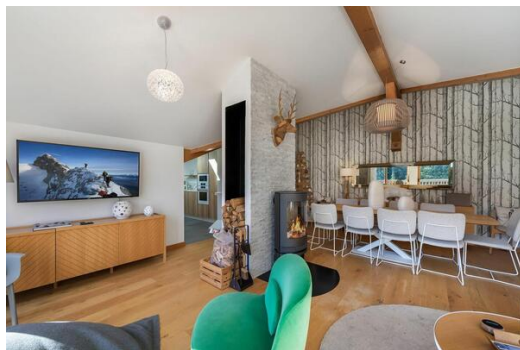


This apartment for rental is located in Belvedere district

France, Courchevel, Courchevel 1650, Le Belvédère

Apartment - REF: TGS-A2468



N° Bedrooms: 3
ski-in/ski-out

N° Bathrooms: 3
Fireplace

N° People: 8
Communal lift

Parking
Dishwasher

M² built: 127 m²
TV

Exposure: Southwest
Washing machine

Floor: 5
Ski Room

Wifi
Distance to centre: 1km

Activities in resort

Skiing/Snowboarding

Golf

Information Apartment in Le Belvédère, Courchevel 1650 Moriond

- N° of people: 8
- M² built: 127 m²
- Terrace
- 3 Bedrooms
- 3 Bathrooms
- Parking
- Floor 5
- Wifi
- Chimney
- Ski-room
- Southwest Facing

- Ski In, Ski Out

The apartment is located in the Belvedere district, famous for its ski-in ski-out and its views of the slopes and the mountains. The apartment is on the top floor of the residence.

- Distance from the center : 5 m
- Closest ski slope : Belvédère
- Distance from the slopes : 0 m
- Distance to ski school : 500 m
- Closest ski lift : télési Belvédère
- Distance from ski lift : 0 m

Living area :

- Open kitchen
- Dining area
- Wood stove
- Living room
- Terrace

Master bedroom :

- Balcony with mountain views, Office, Sofa area, Wardrobe
- 1 Double bed (160 x 200)
- Ensuite bathroom : Bathtub, Hairdryer, Single sink

Double or Twin bedroom :

- 1 Double bed (160 x 200)

Family bedroom :

- Playstation, TV
- 2 Bunk beds (two sleeps) (140 x 200)
- 2 Bunk beds (1 sleep) (90 x 190)
- Ensuite bathroom : Walk-in shower, Single sink, Toilet

Bathroom :

- Bathroom 1 : Double sink , Walk-in shower

Other areas :

- Laundry room
- Boots heater

- Lobby
- Garage

Independent toilet : 1

Multimedia

- Wifi
- TV
- International channels
- Home cinema
- Blue-ray player
- SONOS speaker
- DVD player
- Netflix
- Chromecast
- Home Stereo
- Playstation
- Satellite TV

Also Includes

- Elevator
- Wood fireplace
- Ski locker
- Parking space
- Board games
- Boots heater
- Outdoor furniture







